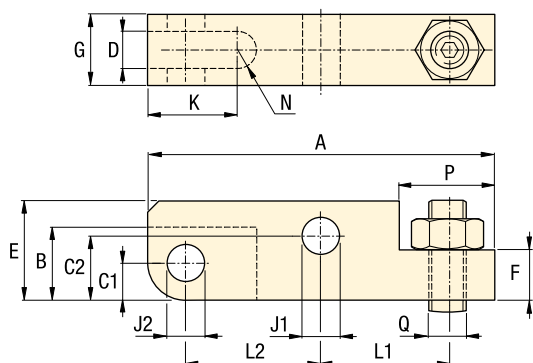


LCAS models Standard Arm

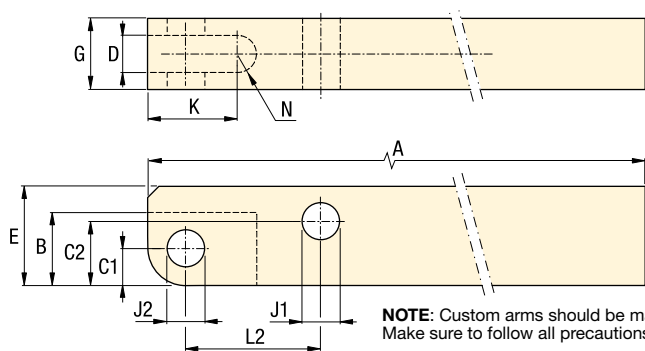


Dimensions in mm []

Clamp capacity kN	Model number	A	B	C1	C2	D	E	F	G
▼ Standard clamp arms									
3	LCAS-32	54,0	13,0	6	9,5	6	16	8	11,85
8	LCAS-82	74,5	17,5	8	15,5	10	25	13	18,85
12	LCAS-122	87,5	22,0	10	19,5	11	32	16	21,85
19	LCAS-192	102,5	26,0	11	24,0	13	38	22	24,85
28	LCAS-282	125,0	30,5	13	29,0	16	45	27	31,85

Clamp. capacity kN	Model number	J1	J2	K	L1	L2	N	P	Q
▼ Standard clamp arms									
3	LCAS-32	6,02-6,07	6,02-6,07	13	23,5	18,5	3	13	M6 x 1,0
8	LCAS-82	10,05-10,10	8,05-8,10	16	32,0	24,5	5	22	M10 x 1,5
12	LCAS-122	12,05-12,10	10,05-10,10	20	37,5	30,0	5,5	25	M12 x 1,75
19	LCAS-192	15,05-15,10	12,05-12,10	24	41,5	36,0	6,5	31	M16 x 2,0
28	LCAS-282	18,05-18,10	15,05-15,10	28	51,0	44,0	8	38	M20 x 2,5

LCAL models Long Arm



NOTE: Custom arms should be manufactured using this print. Make sure to follow all precautions listed.

Dimensions in mm []

Clamp. capacity kN	Model number	A	B	C1	C2	D	E	G	J1	J2	K	L2	N
▼ Long clamp arms													
3	LCAL-32	85	13,0	6	9,50	6	16	11,85	6,02-6,07	6,02-6,07	13	18,5	3,0
8	LCAL-82	105	17,5	8	15,50	10	25	18,85	10,05-10,10	8,05-8,10	16	24,5	5,0
12	LCAL-122	110	22,0	10	19,50	11	32	21,85	12,05-12,10	10,05-10,10	20	30,0	5,5
19	LCAL-192	160	26,0	11	24,00	13	38	24,85	15,05-15,10	12,05-12,10	24	36,0	6,5
28	LCAL-282	220	30,5	13	29,00	16	45	31,85	18,05-18,10	15,05-15,10	28	44,0	8,0

Force: 3 - 28 kN

Pressure: 35 - 350 bar

- E** Brazos de amarre
- F** Bras de bridage
- D** Spannarme

Options

Work supports

43 ▶



Accessories

86 ▶



Important

Clamp arm should be parallel to cylinder mounting surface within 3° to avoid damage to cylinder and linkage. Use the included set screw to adjust clamp arm alignment.

